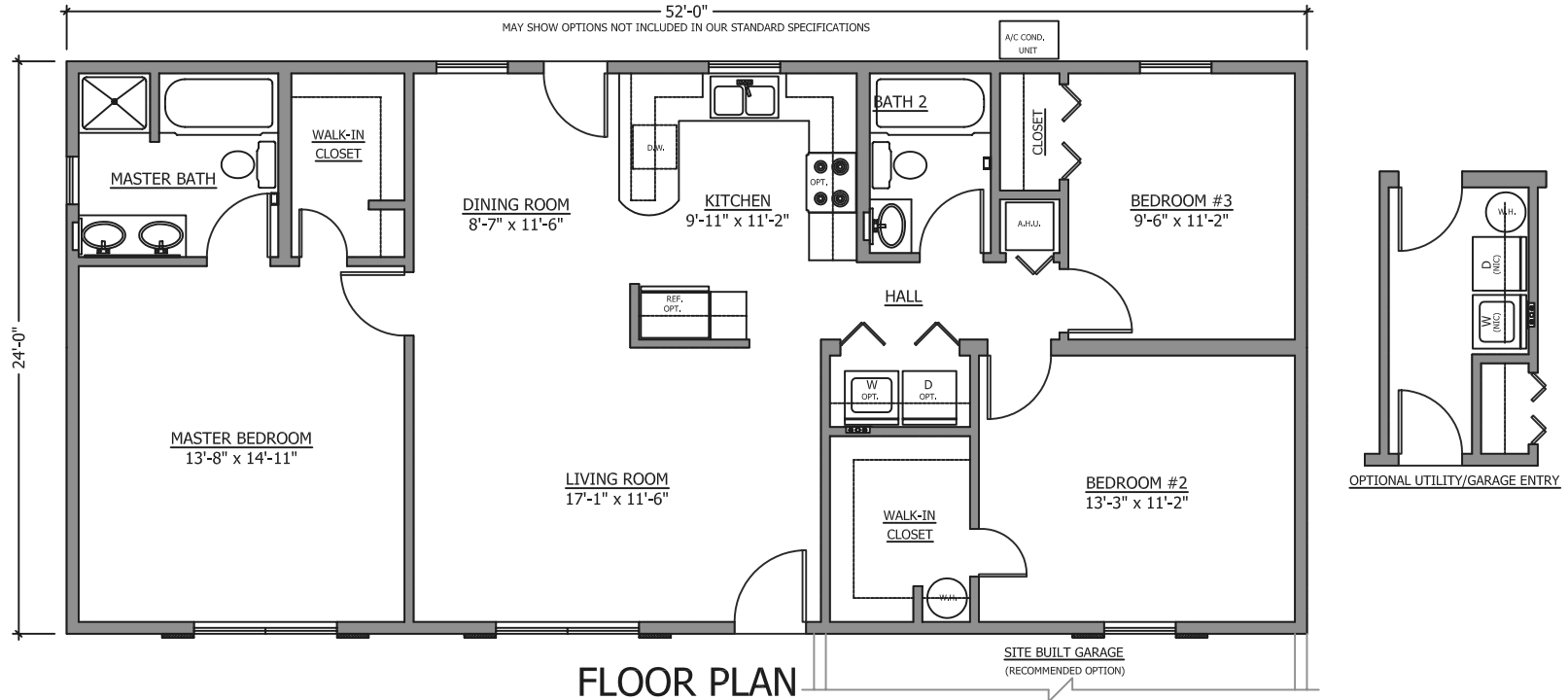




**FRONT ELEVATION**

52'-0"

MAY SHOW OPTIONS NOT INCLUDED IN OUR STANDARD SPECIFICATIONS



**FLOOR PLAN**

**SITE BUILT GARAGE**  
(RECOMMENDED OPTION)

OPTIONAL UTILITY/GARAGE ENTRY

**SOUTHERN STRUCTURES INC.**  
334 CYPRESS ROAD Phone (352) 680-1911  
OCALA, FLORIDA 34472 Fax (352) 680-1903  
WWW.SOUTHERNSTRUCTURESINC.COM

© Southern Structures Incorporated  
These drawings are the sole property of Southern Structures Incorporated, and they may not be reproduced, copied, altered, or transferred in any manner without the express written consent of Southern Structures Incorporated.  
Promotional Drawings may show options not included as standard. These drawings are provided in confidence for the recipient's use only, and the recipient hereby agrees to keep all information strictly confidential. All Rights Reserved.

**"THE ISLAMORADA"**  
**24' x 52' MODULAR HOME**  
**1,248 s.f.**