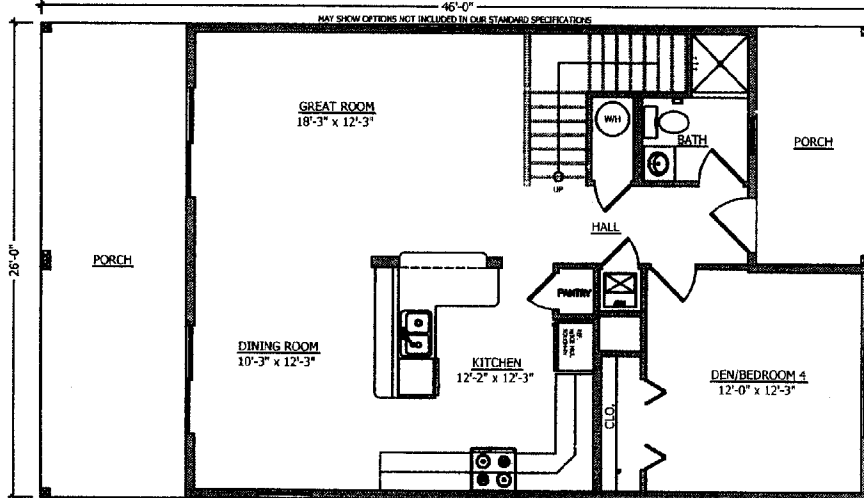


SECOND FLOOR

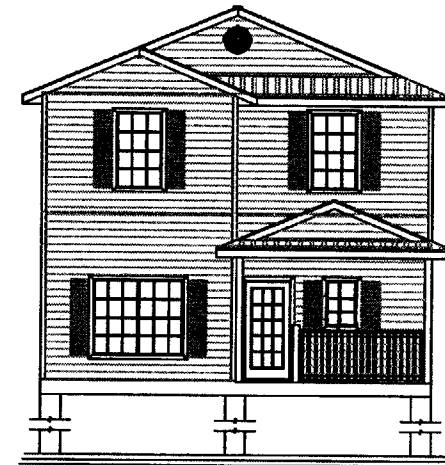
N.T.S.

46'-0" MAY SHOW OPTIONS NOT INCLUDED IN OUR STANDARD SPECIFICATIONS

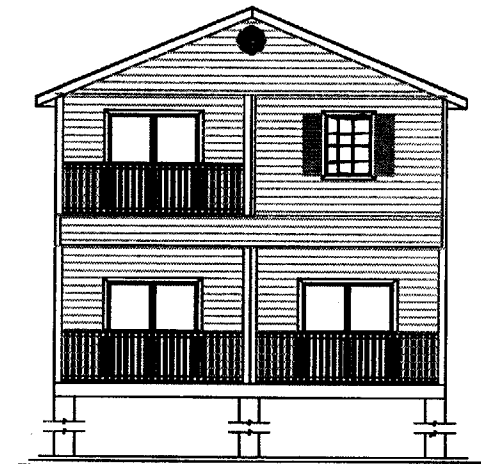


FIRST FLOOR

N.T.S.



FRONT ELEVATION



REAR ELEVATION

MAY SHOW OPTIONS NOT INCLUDED IN OUR STANDARD SPECIFICATIONS

SOUTHERN STRUCTURES INC.

334 CYPRESS ROAD
OCALA, FLORIDA 34472

Phone (352) 680-1911
Fax (352) 680-1903

WWW.SOUTHERNSTRUCTURESINC.COM

© Southern Structures Incorporated

These drawings are the sole property of Southern Structures Incorporated, and they may not be reproduced, copied, altered, or transferred in any manner without the express written consent of Southern Structures Incorporated. Promotional Drawings may show options not included as standard. These drawings are provided in confidence for the recipient's use only, and the recipient hereby agrees to keep all information strictly confidential. All Rights Reserved.

"THE BAHIA"

26' x 46' MODULAR HOME
1,916 s.f.-Living, 394 s.f.-Porch